

THE SHOWER LAB

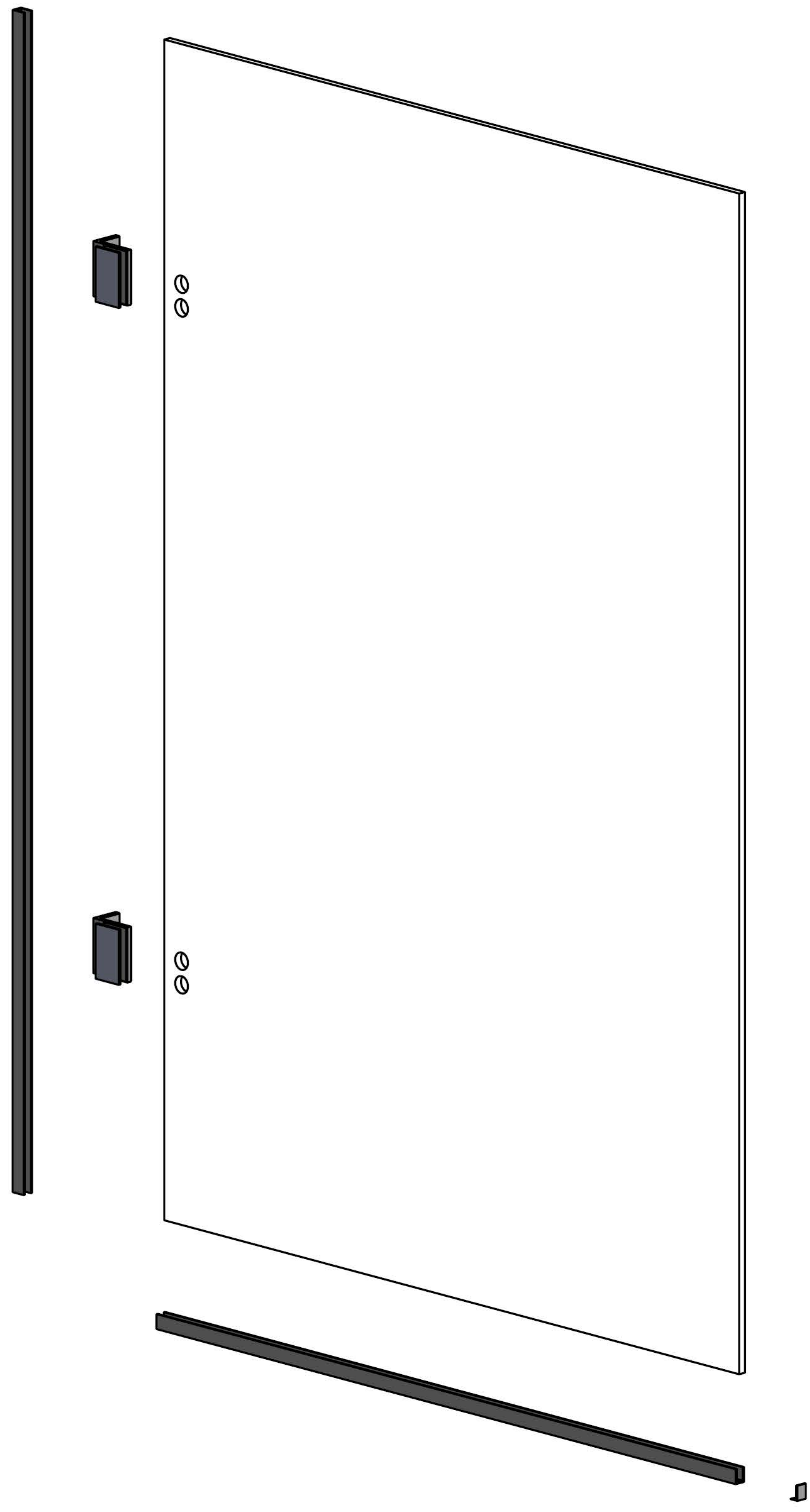


VIEW 16/16C

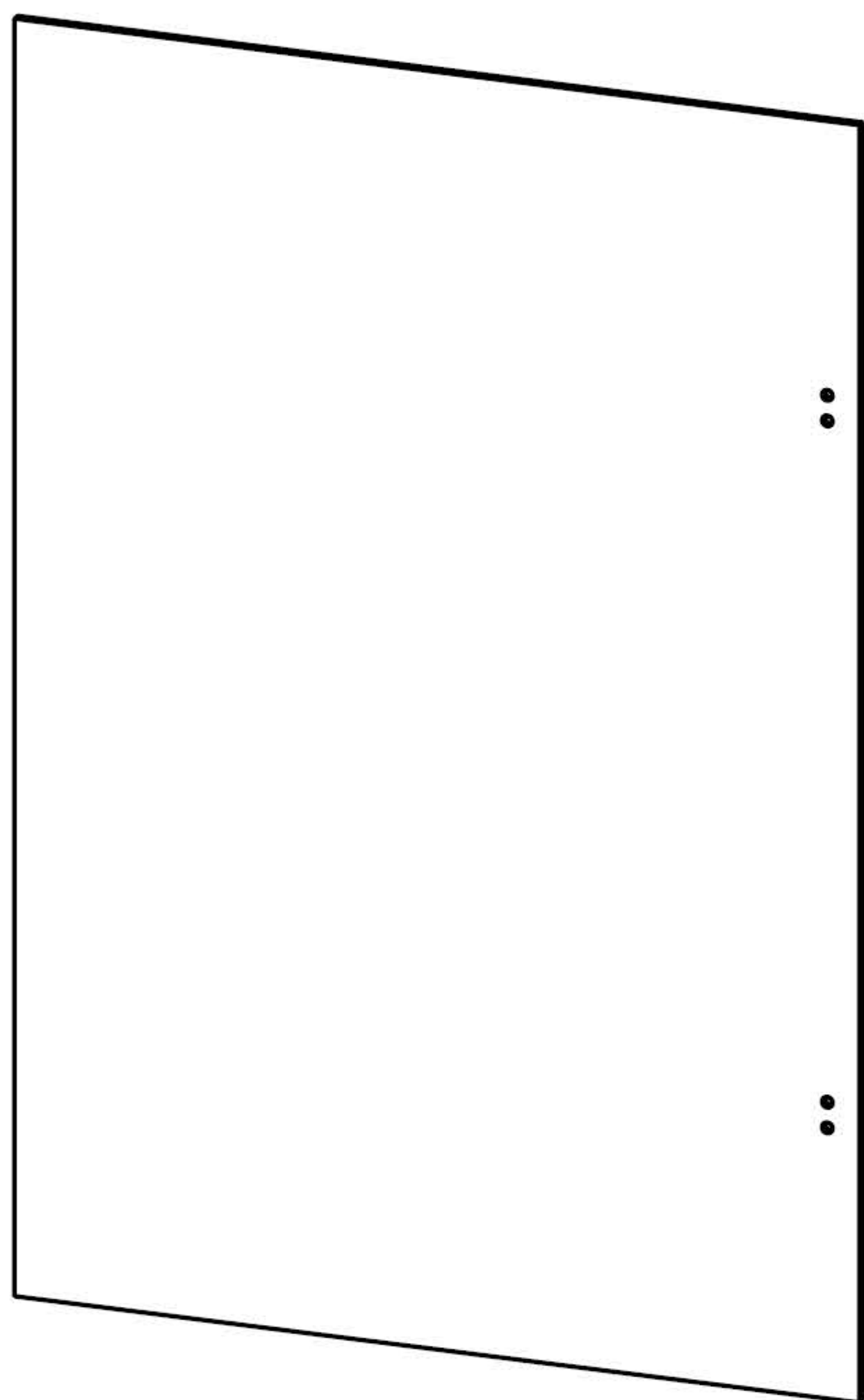


Illustration - View 16/16C
Left Hand

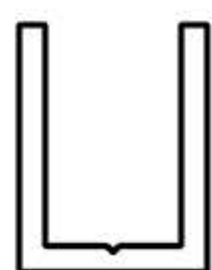
Exploded View



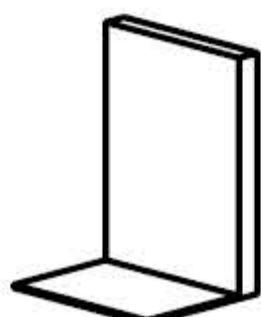
Supplied Parts



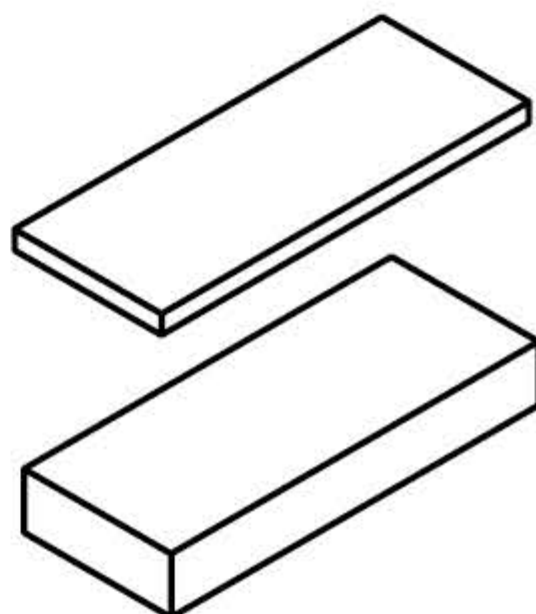
Panel



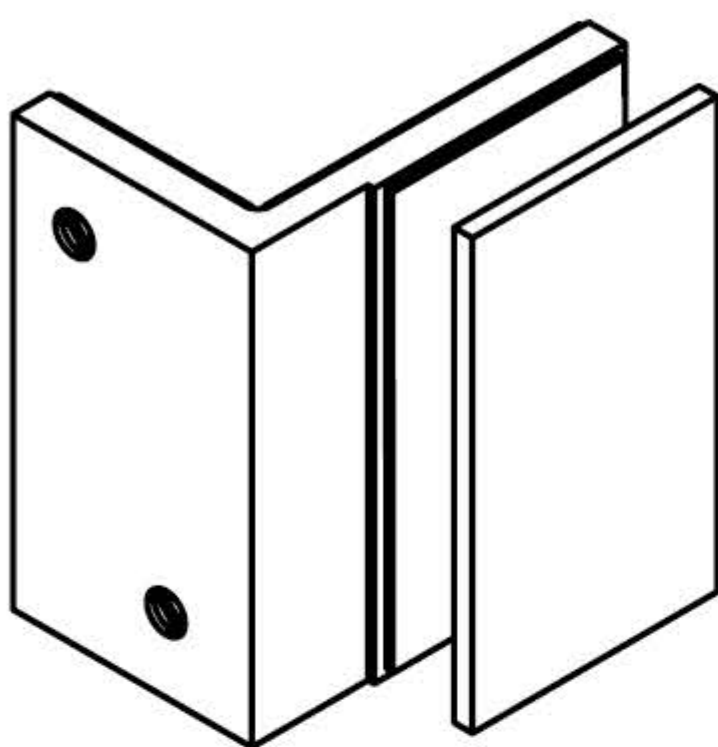
Base channel



Channel End
Cap



Spacers



Wall to Glass
Bracket

Important Information

- This shower screen/enclosure must only be installed by suitably qualified individuals.
- A minimum of two people will normally be required.
- Ensure the appropriate safety equipment, especially protective footwear and glasses is used.

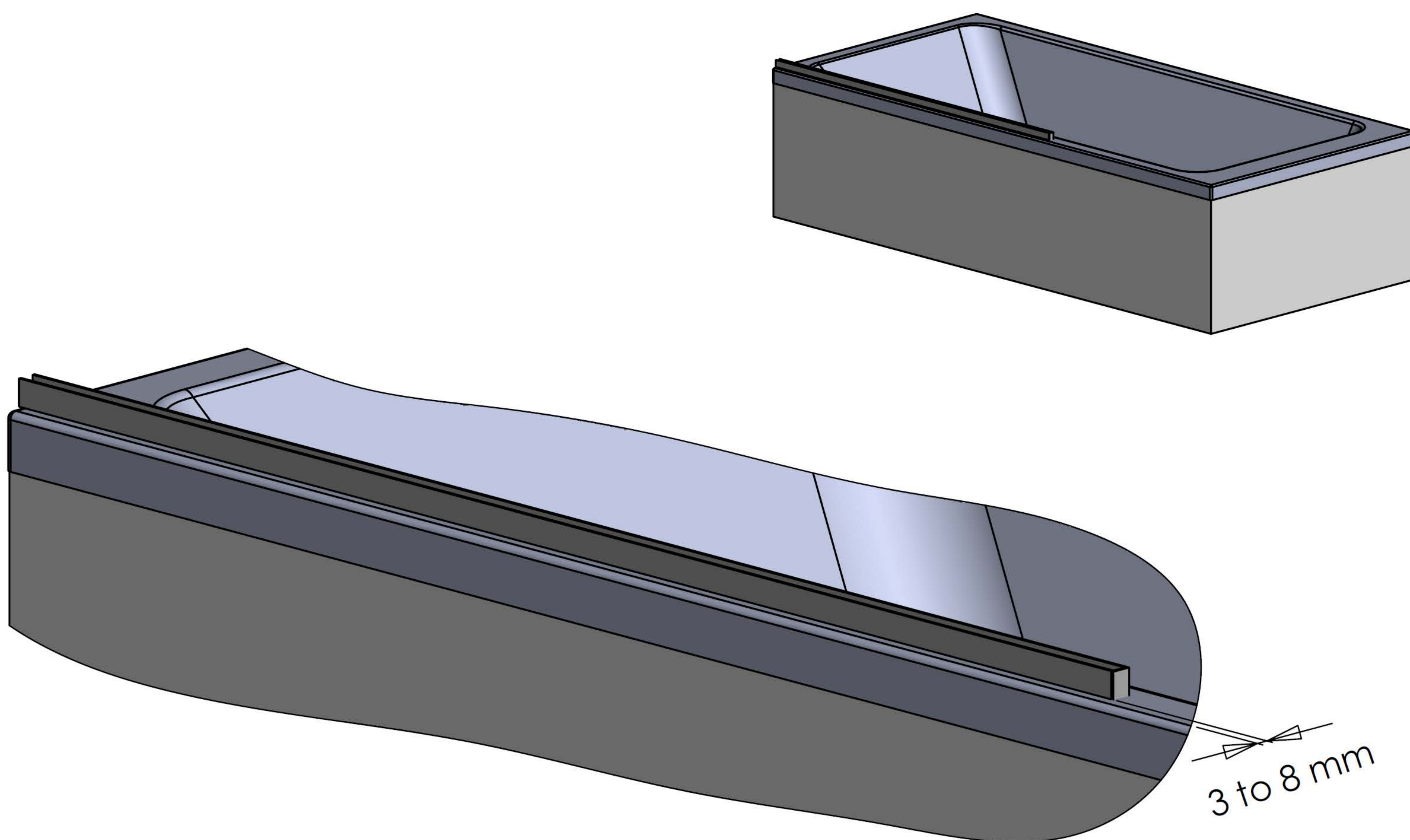
Prior to Installation

- Please check all glass and components for damage and correct sizing prior to installation as subsequent claims will not be accepted.
- The tray/tiled floor on which the screen/enclosure is being installed must be level on all sides.
- It may be necessary to use alternative fixings to those supplied, depending on the properties of the walls.
- Please use the protective corners at all times until the glass is moved to its final position.
- Please ensure that the glass is installed correctly. Take care to avoid installing glass upside down or back to front. Ensure easy clean surface is fitted to the inside.
- Ensure that all surfaces are 100% clean and dry prior to applying silicone sealant.
- Allow a minimum of 24 hours after applying silicone before using your screen/enclosure.

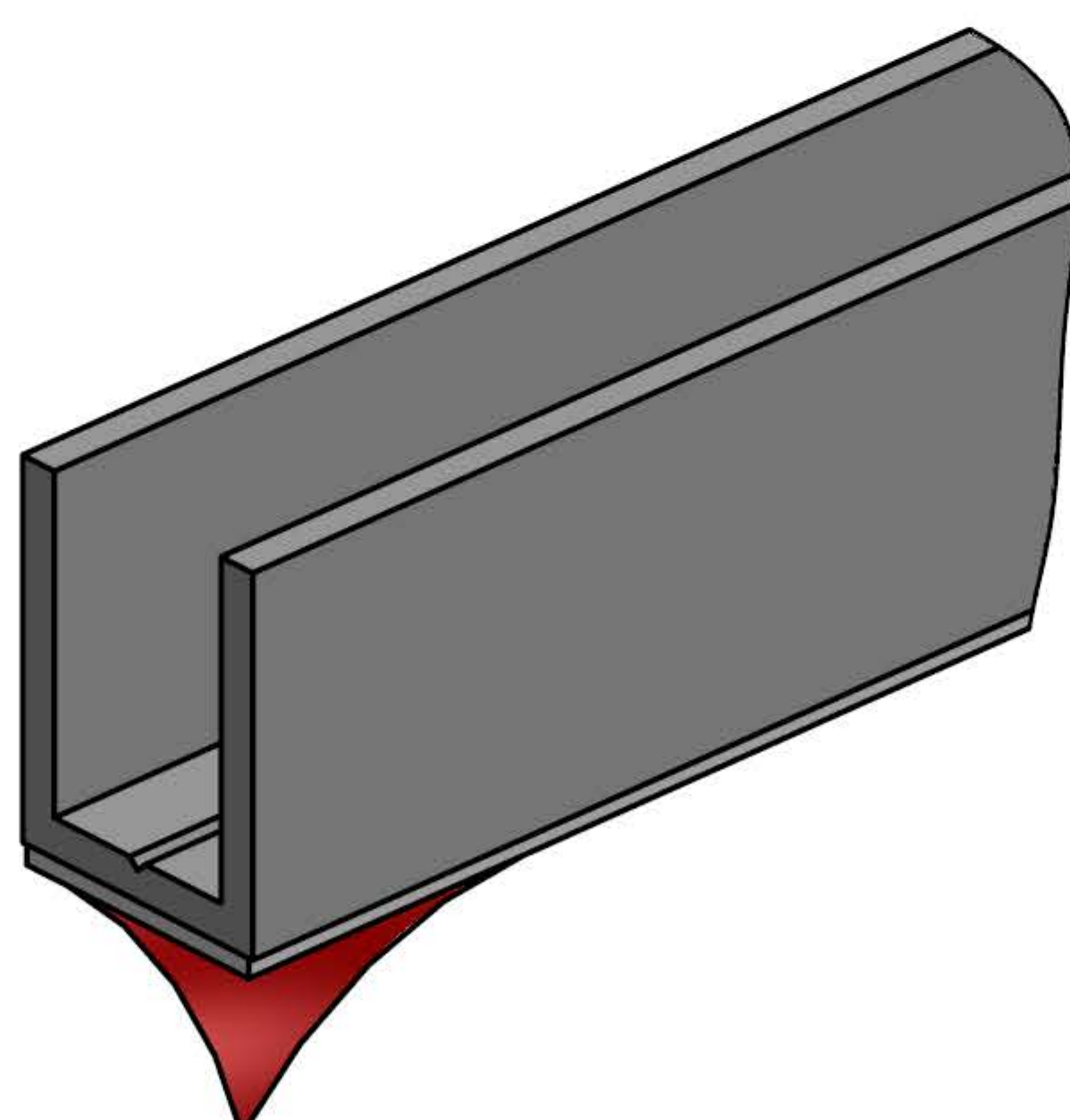
Care and Maintenance (Please ensure these instructions are left with the installed screen/enclosure)

- All glass has been treated with EASY CLEAN glass finish and care must be taken to avoid any abrasive cleaning products that may damage the special surface protection.
- We recommend routine cleaning of your screen/enclosure with hot water and an e-cloth.
- Seals can be removed for thorough cleaning and replacements can be purchased from our sales office, telephone 01375 390444.

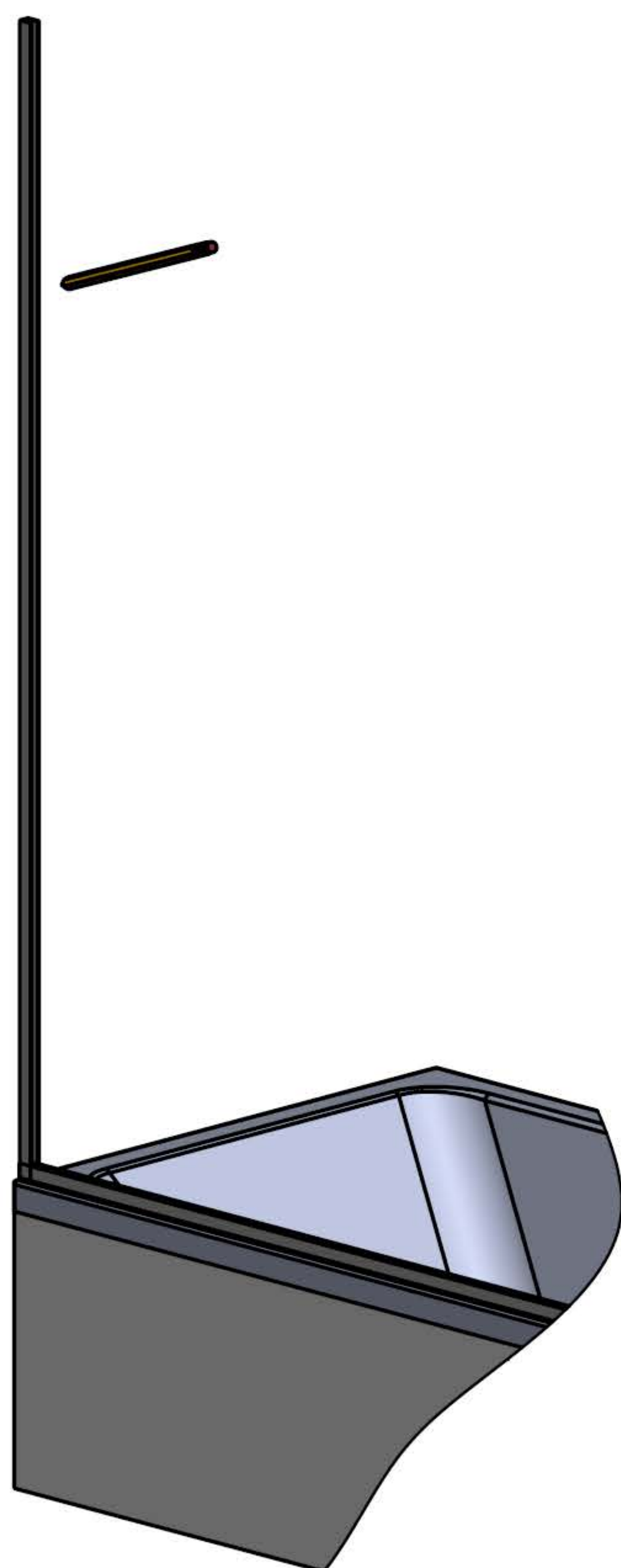
1. Position the base channel onto the edge of the bath. The underframe should be set between 3 and 8 mm from the edge of the bath. Ensure it is placed with the correct orientation as shown.



2. Secure the base channel in place with the self-adhesive pads.



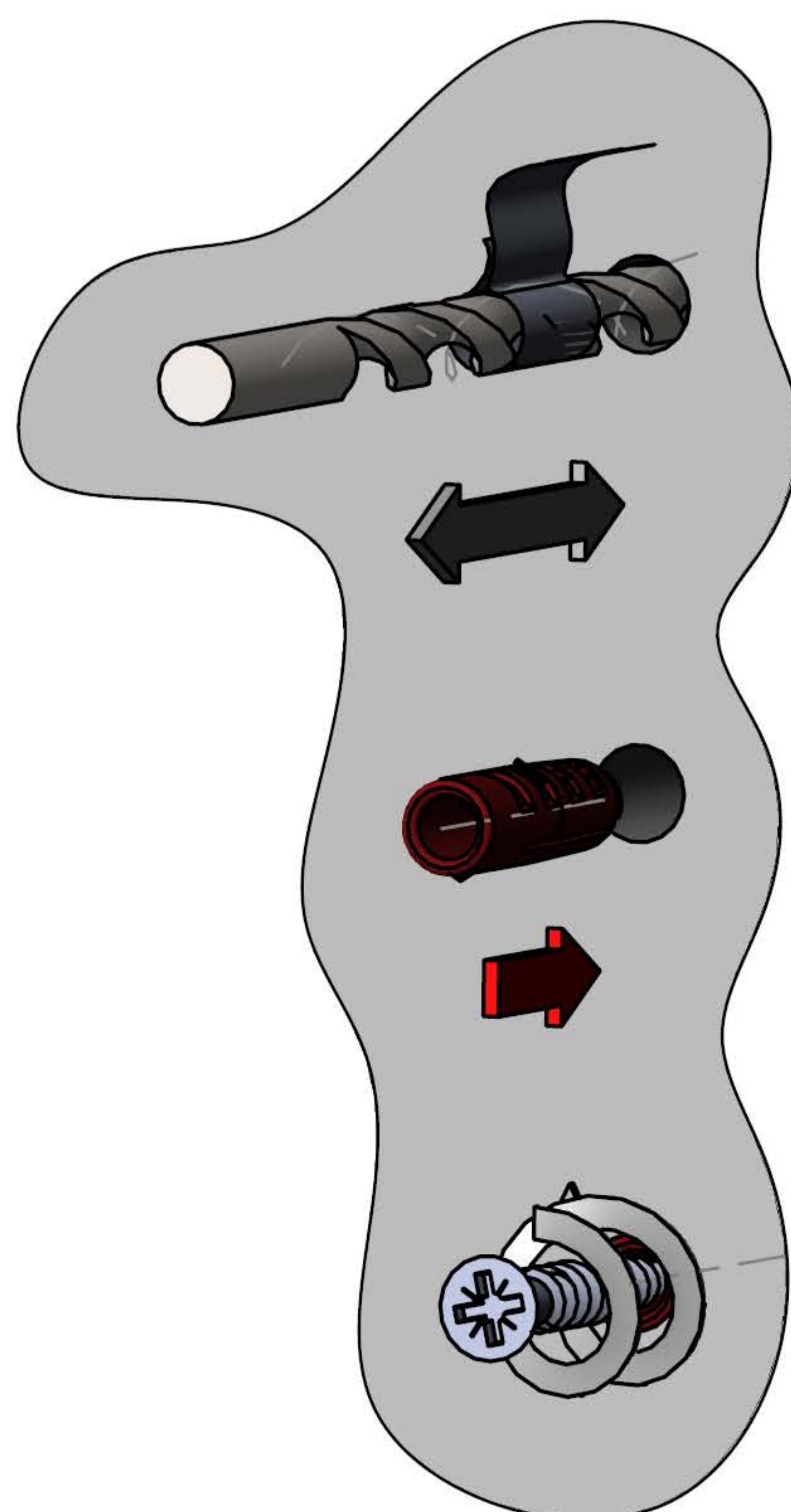
3. Position and level the wall channel. Use a spirit level to check that it is vertical on top of the base channel.



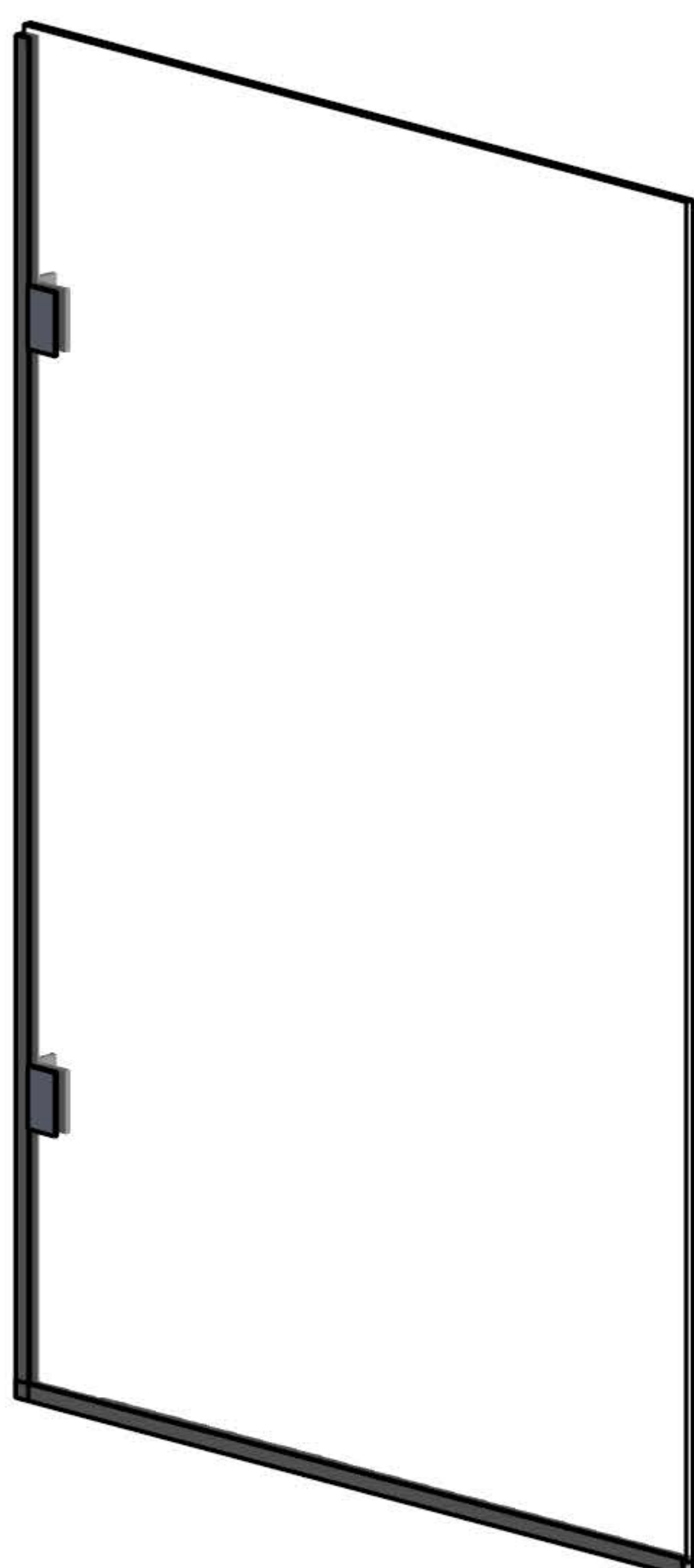
4. Mark through the holes in the wall channel.



5. Remove the wall channel and use a high quality drill bit to drill holes in the wall. Insert wall plugs into the holes. A piece of tape may be attached to the drill to ensure that the correct depth is drilled.

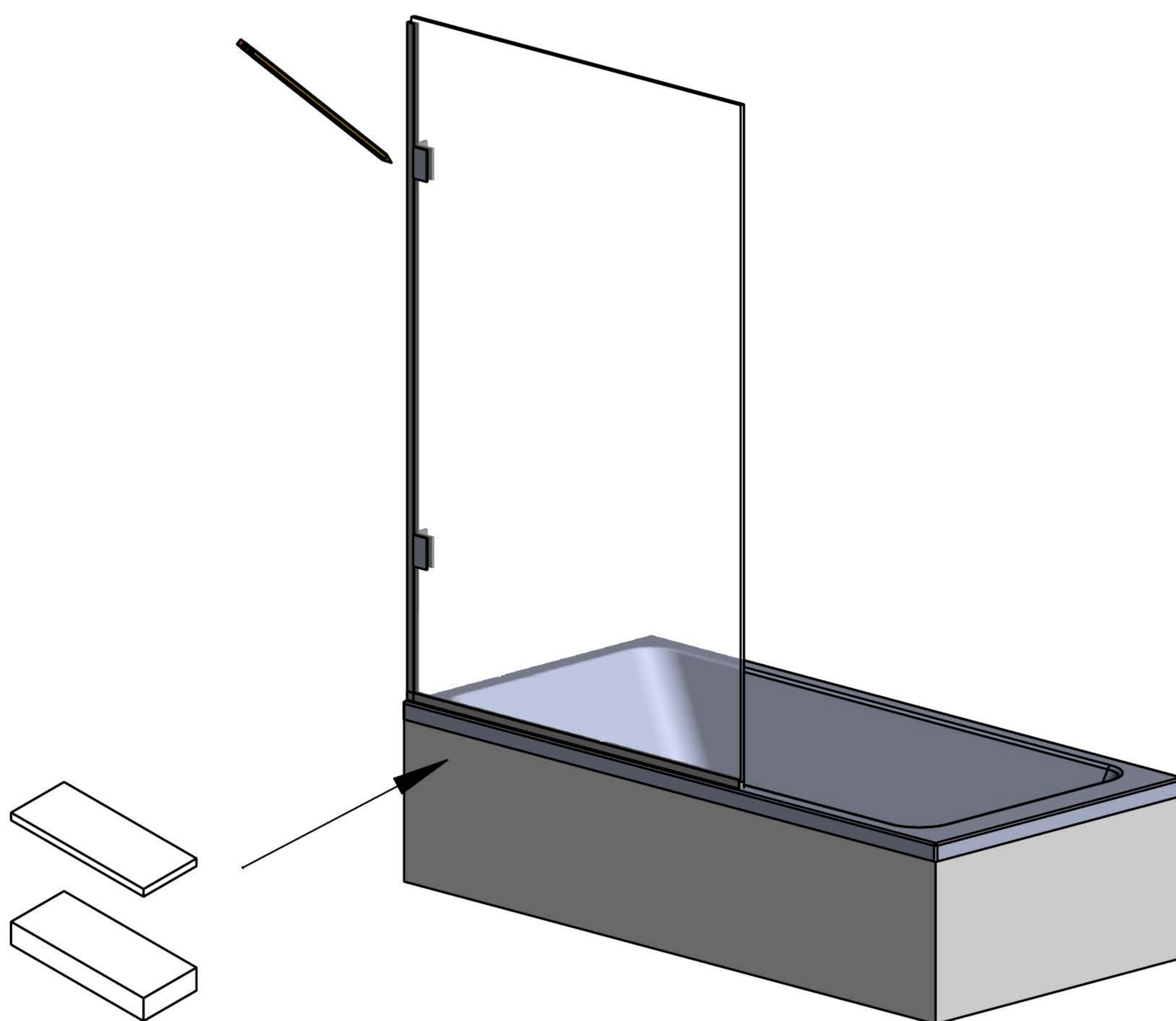


6. Secure the wall channel in place using suitable screws. Do not use silicon at this point.

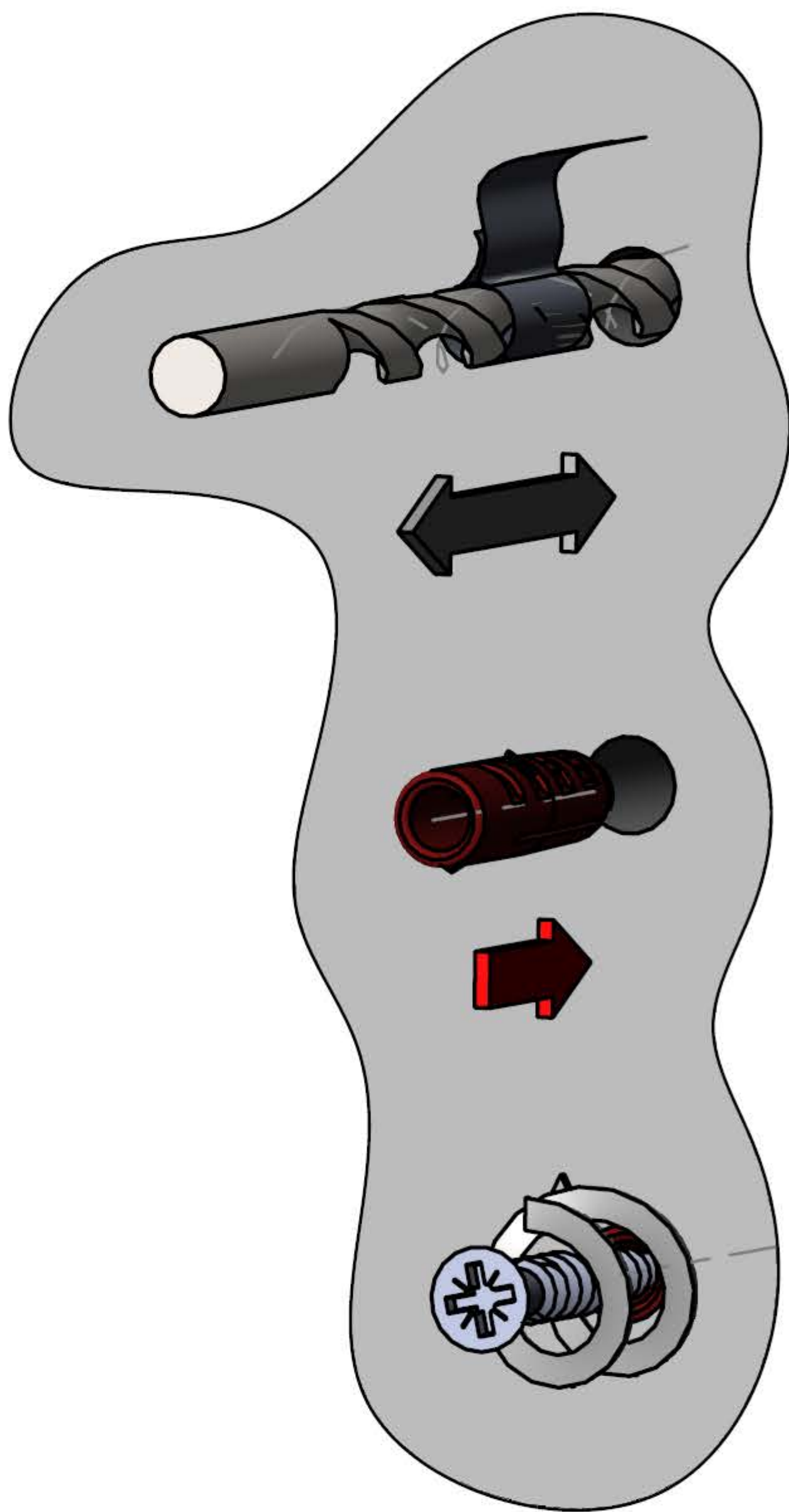
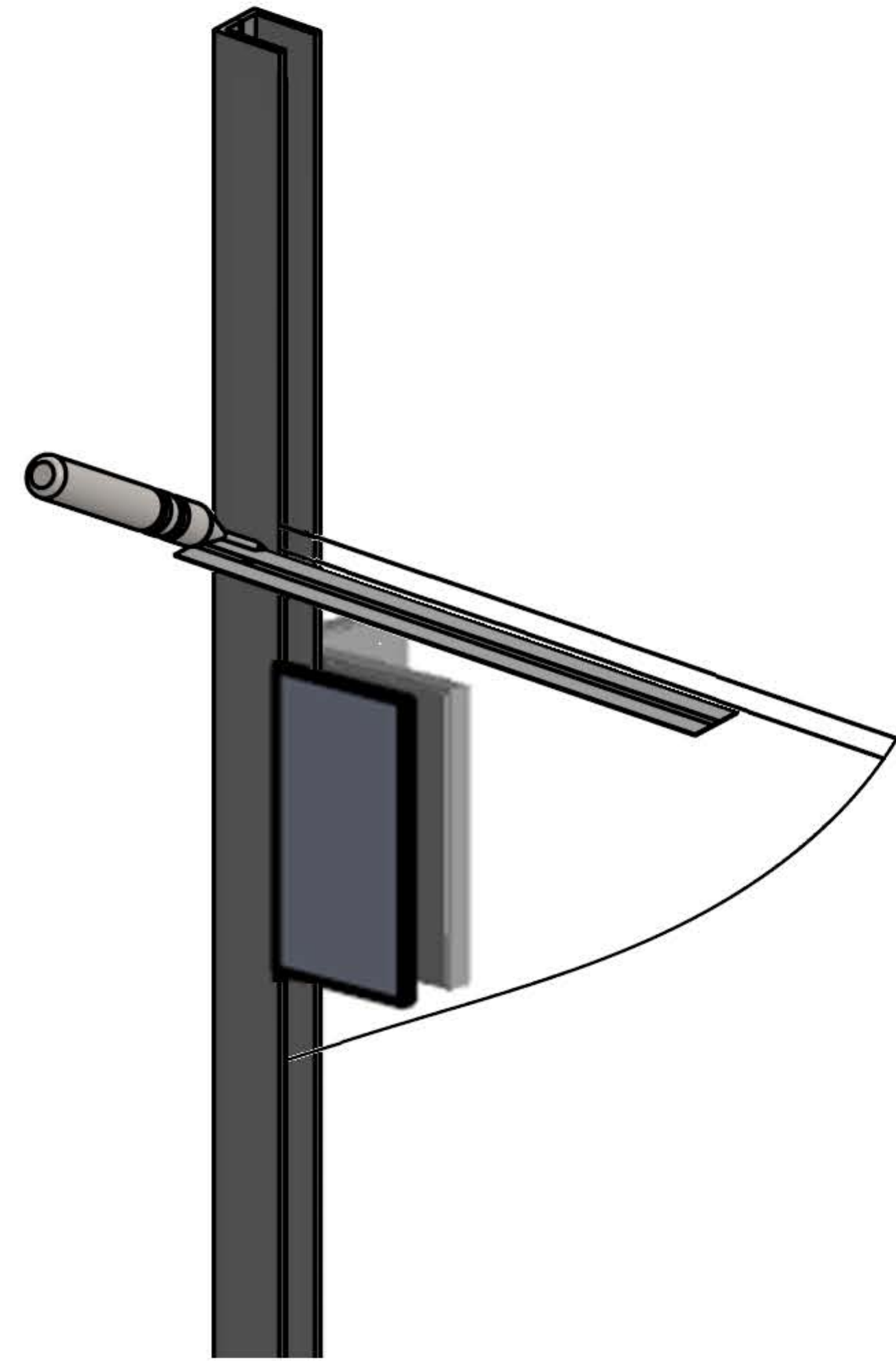


7. Attach the wall brackets to the panel, ensure that the bracket part is orientated so that it will be inside the shower unit when completed.

8. Position the glass into the base channel. Level by adding or removing spacers. Mark the location of the holes for the brackets.

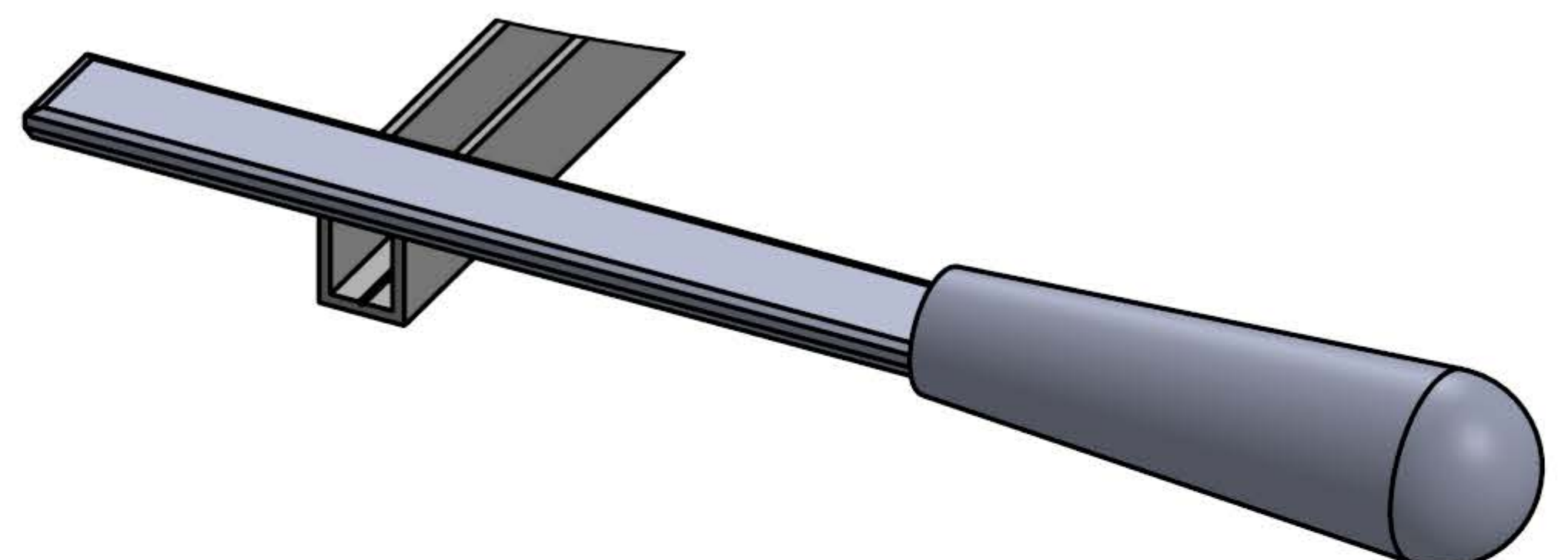
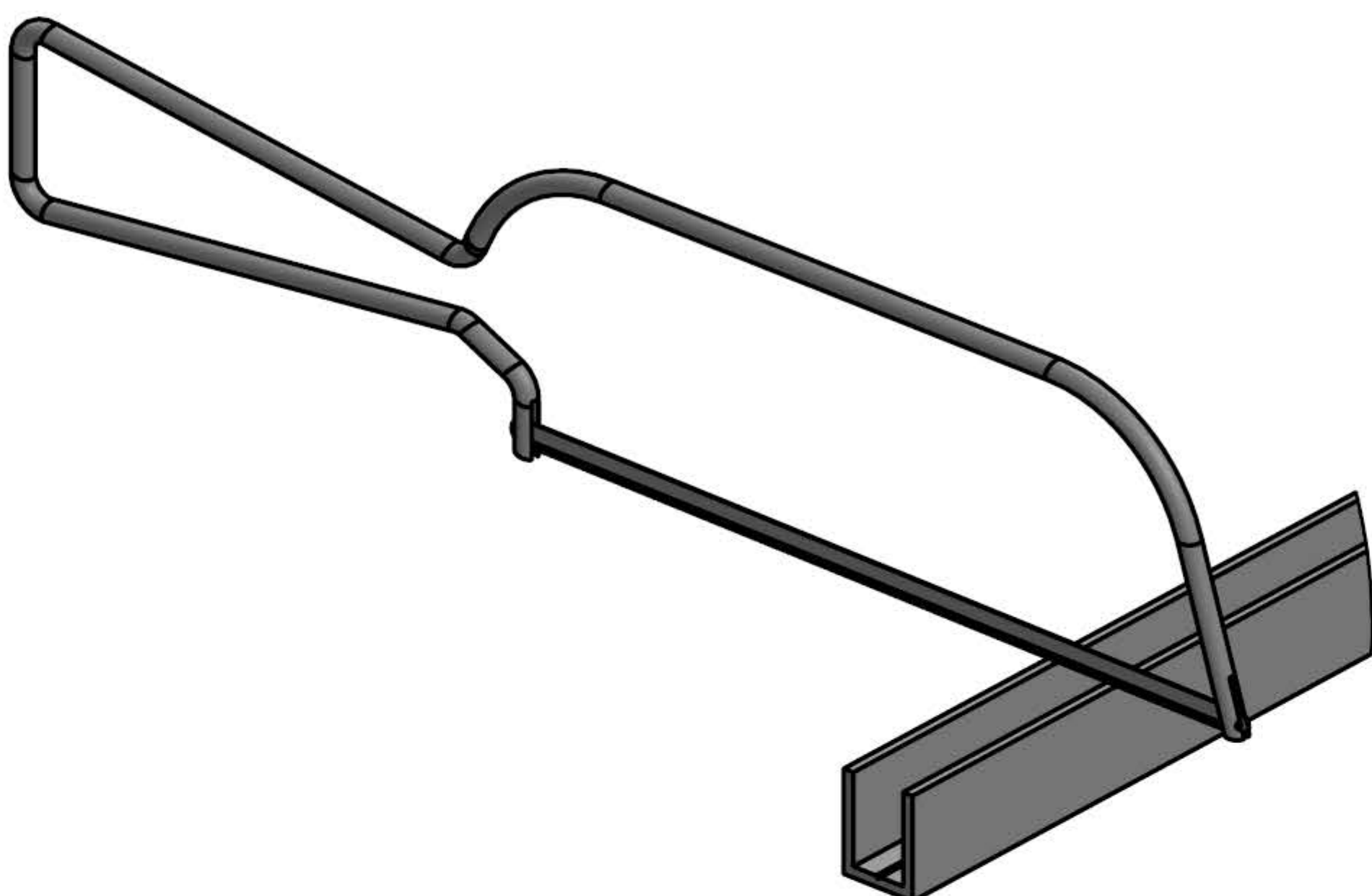


9. Mark the top of the channel where it meets the glass using a scribe and a ruler.

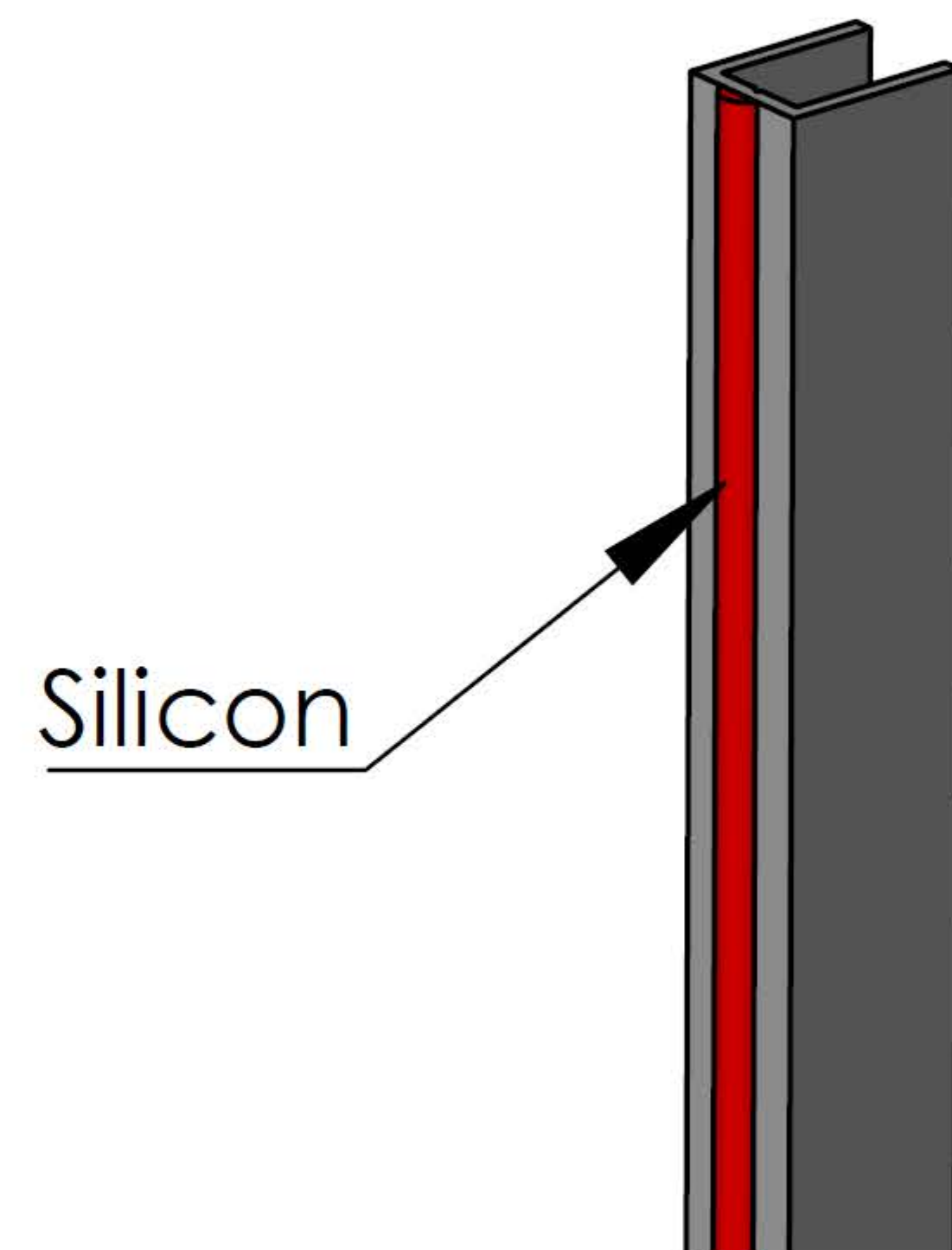


10. Remove the glass and the wall channel and drill the holes for the brackets.

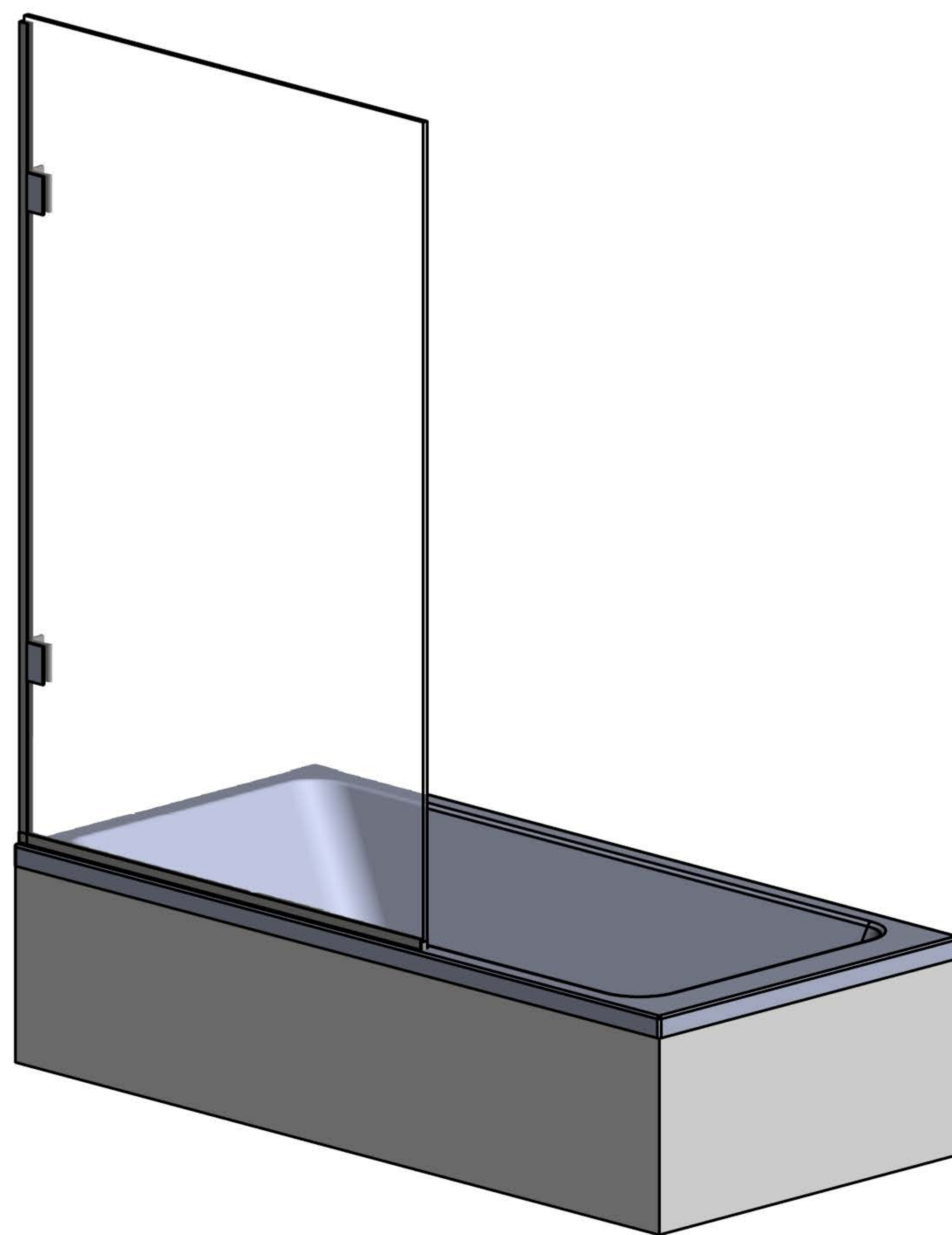
11. Trim the wall channel using a hacksaw. Use a file to remove any burrs.



12. Apply silicon to the rear of the wall channel and refit using suitable screws.

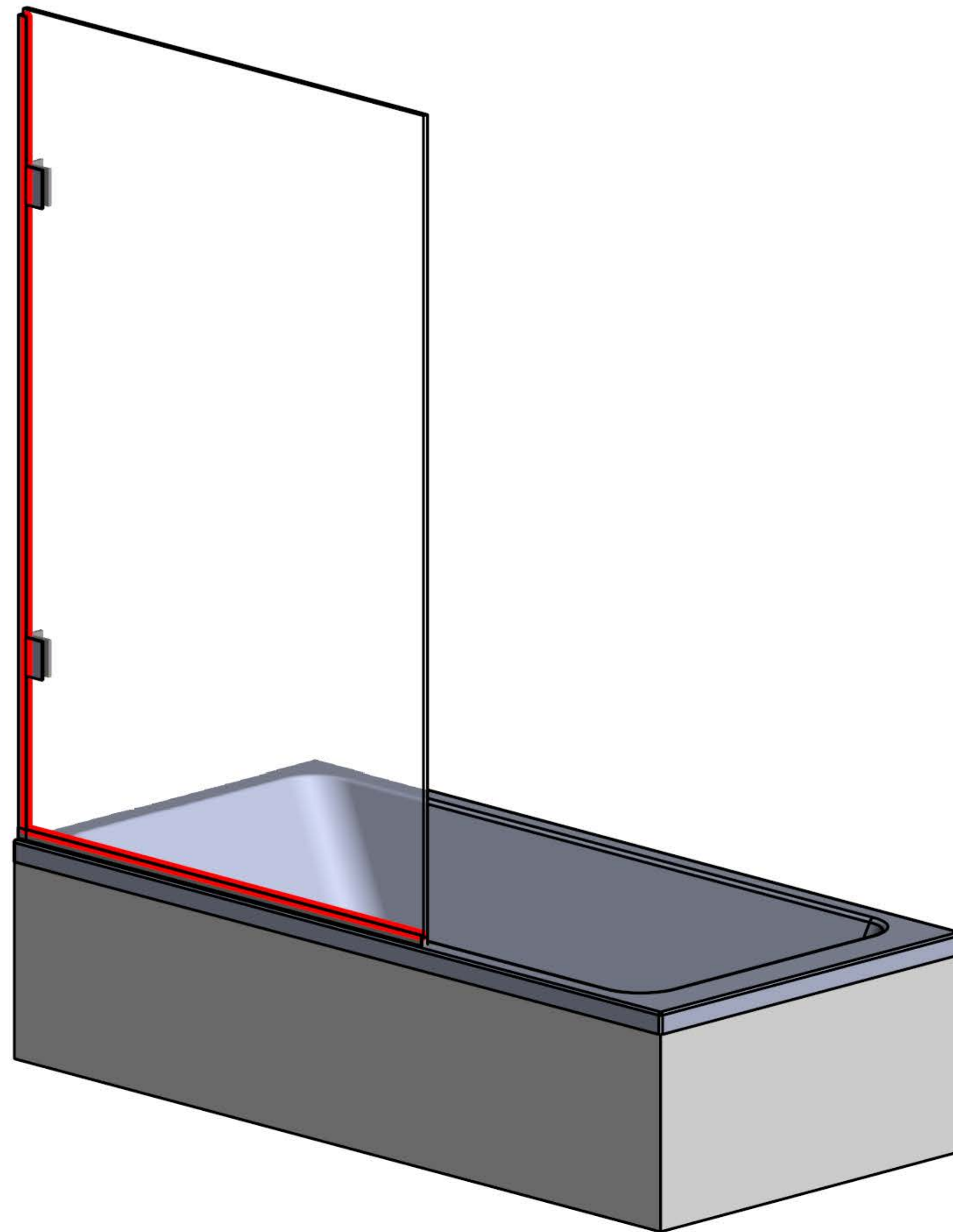


13. Position the panel. Attach the brackets to the wall using suitable screws.

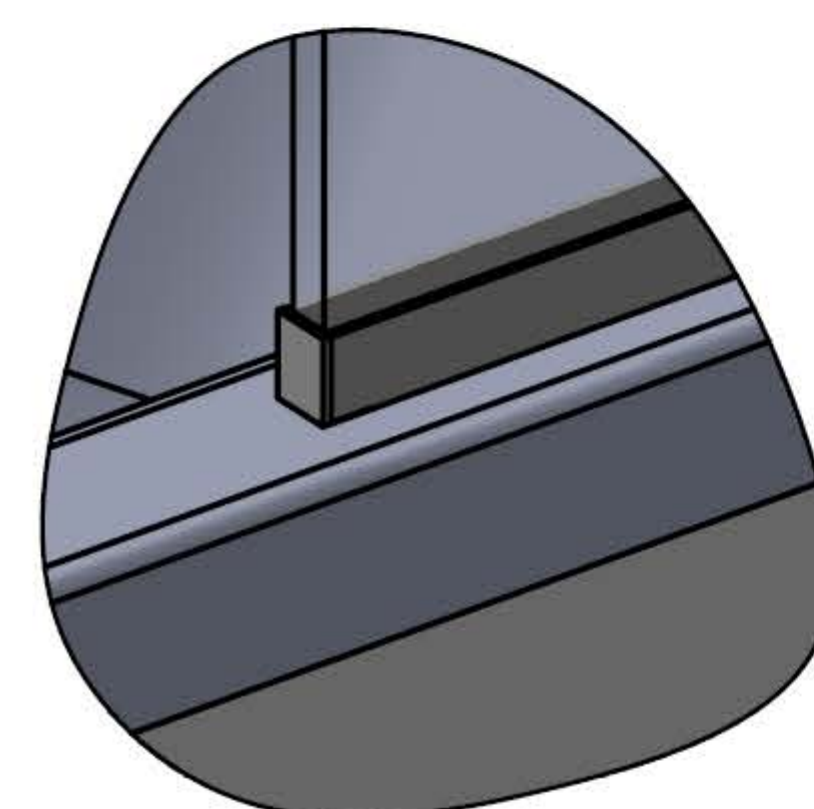


14. Ensure that the brackets are tight enough to hold the glass in place.

13. Position the panel. Attach the brackets to the wall using suitable screws. Apply silicon to the joins between the glass and channel.



14. Insert the channel end cap and seal in place with silicon



The enclosure is now complete, allow the silicon to cure for at least 24 hours before use.